

Product Details

Emission Standard: Euro 5
Max Speed: 90km/h
Spring : 9/11+8,9/12+9
Number of tires □6
Axle weight □3500/7900

Product Display





Technical Parameter

| | |
|--------------------------------|----------------|
| Vehicle model | DFC3110 |
| Engine model | 160hp |
| Total engine | 11400 |
| Curb weight [Kg] | 5170 |
| Gearbox | 5 gears |
| Front/rear axle | 2.8T/ 7.65T |
| Dimensions(mm) | 6870×2495×2530 |
| Seats | 3 |
| Max speed [km/h] | 85 |
| Chassis model | EQ1110F |
| Emission Standard | EURO 5 |
| Rated load [Kg] | 6035 |
| Drive Model | 4×4 |
| Tire Type | 9.00-20 |
| wheel base [mm] | 3950 |
| cargo Box Dimensions(mm) | 4050× 2294×600 |
| Approaching/Departure Angle(°) | 34/19 |
| Front/Rear suspension(mm) | 1065/1855 |

Our Company & Factory

Brief Introduction:

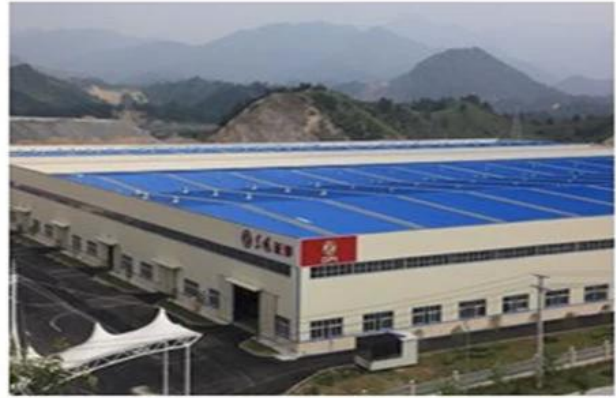
Miou is located in Shiyan, Hubei province, China. Our company is specialized in

R & D, manufacture and sales of special purpose vehicles .We are the special purpose vehicles production base company of the Chinese Dongfeng Motor Group and also the Overseas Department of Dongfeng Zhengmeng Special Purpose Vehicle Co., Ltd.

Company Display:



Factory Display:



Verified Certificates



Package & Shipment

Delivery Detail: Shipped in 15 days after payment

Packaging Details: nude, covered with wax, small type can be put into 20'GP or 40'GP, big type can be carried by bulk carriers or ro-ro ship or according to your requirements



FAQ

Q:How about the warranty?

A:One year

Q:Do you have ISO certificate ?

A:Yes , we have,pls contact us to get our certifications.

Q:How about the delivery time?

A: Most of our trucks are all have in stock ,We can delivery to you within 15 days, if specially ordered , we always need around 30 days for production.

Q:How about shipping ?

A:Big size trucks always shipping by RORO or Bulk ship or flat bed container or open top container , small type can shipping by container , Pls contact us to get a shipping quotation .

Q: How many trucks does your factory produce per years?

A:Almost 3000 units

Q: How do you control the quality of product?

A:Our Factory is standard production work ship,got ISO CCC BV Certification,our workers are well trained. Our very product under goes a scrutinizing inspection process.

Q: How about your product After-sales service system?

A:Our main export country have accepted after-sales service,some of country used the third department service.

Q: Do you accept Custom orders? What's is your MOQ order?

A:Yes, we do, our MOQ is 1 set.

Q: What's the payment terms?

A:By T/T or L/C at sight.

Q:Which country do you have exported to?

A: our special trucks can be found in many parts of the world, such as Russia, Ukraine, Kazakhstan, Azerbaijan, Iran, Iraq, Algeria, Turkey, Brazil, Thailand, Vietnam, Angola etc, and gain goo