

Product Details

- 1.Condition:New
- 2.Brand Name:Dongfeng
- 3.Drive Wheel:4x2
- 4.Transmission Type:Manual
- 5.Emission Standard:Euro 3
- 6.Feature:truck mounted aerial work platform
- 7.Fuel Type:Diesel
- 8.Place of Origin:Hubei,China(Mainland)
- 10.mondel:JDF5040JGK

Product Display



Technical Parameter

Main specifications			
Product model	JDF5040JGK		
Gross weight(Kg)	4255	gears	5
Curb weight(Kg)	3930	Drive type	4*2
Cab seats(person)	2	Front/rear hang(mm)	1032/1768
Engine	YC4F90-30	Wheelbase(mm)	3300
Axle No.	1	displacement	2.659L
Chassis specifications			
Chassis model	EQ1042N20D3	Manufacturer	Dongfeng motor co., ltd
Brand name	Dongfeng	Tires No.	6
dimension(mm)	6100×1990×2990	Tire specification	7.00R16
Steel spring number	8/9+5	Rear track(mm)	1466
Fuel type	Diesel	Emission standard	Euro3
	The Max height		8-10m
	Maximum radius of homework		10m
	Max horsepower		95hp
	Maximum output power		66kW
	front track[]mm[]		1506

Our Company & Factory

Brief Introduction:

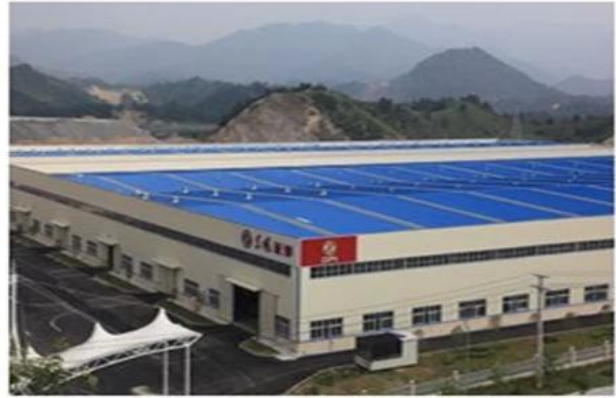
Miou is located in Shiyan, Hubei province, China. Our company is specialized in

R & D, manufacture and sales of special purpose vehicles .We are the special purpose vehicles production base company of the Chinese Dongfeng Motor Group and also the Overseas Department of Dongfeng Zhengmeng Special Purpose Vehicle Co., Ltd.

Company Display:



Factory Display:



Verified Certificates



Package & Shipment

Delivery Detail: Shipped in 15 days after payment

Packaging Details: nude, covered with wax, small type can be put into 20'GP or 40'GP, big type can be carried by bulk carriers or ro-ro ship or according to your requirements



Q:How about the warranty?

A:One year

Q:Do you have ISO certificate ?

A:Yes , we have,pls contact us to get our certifications.

Q:How about the delivery time?

A: Most of our trucks are all have in stock ,We can delivery to you within 15 days, if specially ordered , we always need around 30 days for production.

Q:How about shipping ?

A:Big size trucks always shipping by RORO or Bulk ship or flat bed container or open top container , small type can shipping by container ,Pls contact us to get a shipping quotation .

Q: How many trucks does your factory produce per years?

A:Almost 3000 units

Q: How do you control the quality of product?

A:Our Factory is standard production work ship,got ISO CCC BV Certification,our workers are well trained.

Our very product under goes a scrutinizing inspection process.

Q: How about your product After-sales service system?

A:Our main export country have accepted after-sales service,some of country used the third department service.

Q: Do you accept Custom orders? What's is your MOQ order?

A:Yes, we do, our MOQ is 1 set.

Q: What's the payment terms?

A:By T/T or L/C at sight.

Q:Which country do you have exported to?

A: our special trucks can be found in many parts of the world, such as Russia, Ukraine, Kazakhstan, Azerbaijan, Iran, Iraq, Algeria, Turkey, Brazil, Thailand, Vietnam, Angola etc, and gain good reputation from local market.

Contact us

Milla

Tel:+86 0719 8319942

Mob:+8618772815090

**Email: Chinatruck@chinasonglin.cn
njxanjx@163.com**

Web:www.mioutruck.com

