

Product Details

- 1.product name□DFA1110SJ11D3 Liquid tanker truck
- 2.G.V.W(KG)□11495kg
- 3.volume□8m³
- 4.rated loading capacity□14000kg
- 5.overall dimension□7150×2200×2780mm
- 6.wheel base□3800mm
- 7.Condition: New
- 8.Drive Wheel:6x4

Product Display



Technical Parameter

Our Company & Factory

Product model	DFA1110SJ11D3
Drive Model□	4X2
Wheel Base□	3800mm
Overall Dimension	7150*2200*2780mm
vehicle weight	5000kg
Total quality	11495kg
Max speed	80.0KM/h
Front/Rear suspension	1210/1890mm
engine mondel	YC4E140-42
Displacement	4260L
Rated power	103kW

Tire Type	7.50R16 14PR
Front trace	1770,1831,1740,1845,1769,1903
rear trace	1640,1586,1610,1680,1629
rated load	6300kg
minimum bending radius	1900m
Maximum gradability	45°
Approaching/Departure Angle(°)	19/12
Number of leaf spring	8/10+7

Our Company & Factory

Brief Introduction:

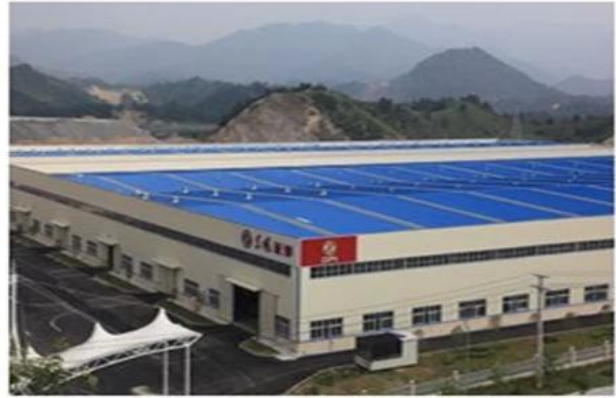
Miou is located in Shiyan, Hubei province, China. Our company is specialized in

R & D, manufacture and sales of special purpose vehicles .We are the special purpose vehicles production base company of the Chinese Dongfeng Motor Group and also the Overseas Department of Dongfeng Zhengmeng Special Purpose Vehicle Co., Ltd.

Company Display:



Factory Display:



Verified Certificates



Package & Shipment

Delivery Detail: Shipped in 15 days after payment

Packaging Details: nude, covered with wax, small type can be put into 20'GP or 40'GP, big type can be carried by bulk carriers or ro-ro ship or according to your requirements



Q:How about the warranty?

A:One year

Q:Do you have ISO certificate ?

A:Yes , we have,pls contact us to get our certifications.

Q:How about the delivery time?

A: Most of our trucks are all have in stock ,We can delivery to you within 15 days, if specially ordered , we always need around 30 days for production.

Q:How about shipping ?

A:Big size trucks always shipping by RORO or Bulk ship or flat bed container or open top container , small type can shipping by container , Pls contact us to get a shipping quotation .

Q: How many trucks does your factory produce per years?

A:Almost 3000 units

Q: How do you control the quality of product?

A:Our Factory is standard production work ship,got ISO CCC BV Certification,our workers are well trained. Our very product under goes a scrutinizing inspection process.

Q: How about your product After-sales service system?

A:Our main export country have accepted after-sales service,some of country used the third department service.

Q: Do you accept Custom orders? What's is your MOQ order?

A:Yes, we do, our MOQ is 1 set.

Q: What's the payment terms?

A:By T/T or L/C at sight.

Q:Which country do you have exported to?

A: our special trucks can be found in many parts of the world, such as Russia, Ukraine, Kazakhstan, Azerbaijan, Iran, Iraq, Algeria, Turkey, Brazil, Thailand, Vietnam, Angola etc, and gain good reputation from local market.

Contact us

We provide you sincerely service if you have interest,contact us now!

Remarks:

The above information is just for your reference. We can manufacture the trucks as per your request and we can fulfill all your demands.

Should you have any other questions or need any other information, pls feel free to contact me. It would be my great pleasure to be on your service. Pls check my contact information as following:

Milla

Tel:+86 0719 8319942

Mob:+86 18772815090

**Email: Chinatruck@chinasonglin.cn
njxanjax@163.com**

Web:www.mioutruck.com

