

Product Details

Quick Details:

Drive Wheel: 6x4
Capacity (Load): 11-20T
Type: Diesel
Horsepower: 280HP

Condition: New Full
Engine type: ISD2120
Model Number: DZ5250DZ
Size: 7795*2450*2910
Electric system: 24v

Product Display



Technical Parameter

Dump Truck			
Item	Unit	Parameter	
Vehicle model	/	DZ5250DZ Dump Truck	
Overall dimensions	mm	7795*2450*2910	
Front loading	kg	25000-26000	
GVW	kg	Approx=23000	
Rated loading capacity	kg	Approx=21000	
Mass in working order	kg	Approx=23000	
Body internal dimensions	mm	4750*2300*1000	
Wheel base	mm	3500+1300	
RR track base	mm	1240/1580	
Maximum chassis turn angle	°	30°/90°	
Chassis type	chassis	ISD2120/35	
Box brand	box	IS	
Box specification	IS 30-20.15, IS 20-10, IS 1000/15, IS 800/15	Engine type	ISD2120
Traction system	6x4	transmission	8 speed with over drive
Number of axles	3	Electric system	24v
Operation control system	Electrically hydraulic control	Maximum passengers	3
Equipment	Equipped with electric hydraulic system and operating system		
Structure & type	Structure is simple, operation is convenient and sturdy is inalterable		
Engine	Dongfeng Cummins Environmental Protection supercharge diesel engine		
Maximum cycle	12 days		
Warranty	12 months from the date of supply		
Factory price	100000/120000		

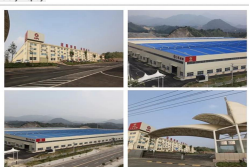
Our Company & Factory

Brief Introduction:
Hubei is located in Shijiazhuang, Hubei province, China. Our company is specialized in R & D, manufacture and sales of special purpose vehicles. We are the special purpose vehicles production base company of the Chinese Dongfeng Motor Group and also the Chinese Department of Dongfeng Changan Special Purpose Vehicle Co., Ltd.

Company Display:



Factory Display:



Verified Certificates



Package & Shipment

Packaging Details:
truck covered with wax, small type can be put into 20'GP or 40'GP, big type can be carried by bulk container on a ship or according to your requirements

Delivery Detail: 12 days



Contact us

We provide you sincerely service, if you have interest, contact us now!

REMARKS:
The above information is just for your reference. We can manufacture the trucks as per your request and we can fulfill all your demands.
If you have any other questions or need any other information, please feel free to contact me. It would be my great pleasure to be your service. Please check my contact information as following:

Manager Sara
Shijiazhuang Sara
Tel: 86-0719-6310942
Mob: 86-15877781669
E-mail: truck@hinasonglin.cn
Address: Cassin Road No. 8,
Zhongnan District, Shijiazhuang City, Hubei province

Hubei Hina Special Vehicle Technology Co., Ltd